



Art Education at Ashford School

Danielle Brodoff
Art Teacher at Ashford School

Connecticut Art Education Curriculum Recommendations

- The Art Curriculum is based off of state frameworks below:
 - National Visual Arts Standards
 - Connecticut Visual Arts Standards
- Ashford Visual Arts Curriculum

Elements of Art

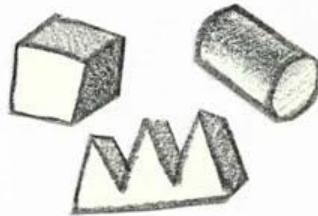
LINE



SHAPE



FORM



SPACE



VALUE



TEXTURE

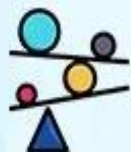


COLOR

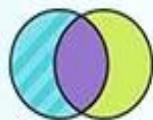


WHAT ARE THE PRINCIPLES OF DESIGN

Balance



Contrast



Repetition



Rhythm



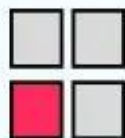
proportion



Variety



Unity



Emphasis



Pattern



Movement



Harmony

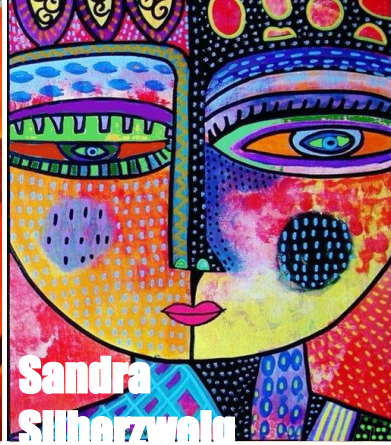
Materials Used by Grade

Pre-K	K-1	2-3	4-5	6-8
Watercolor Paint Tempera Paint Crayon Oil Pastel Textiles Chalk Pastel Finger Paint Assorted Craft Items Clay Assorted Papers	Watercolor Paint Tempera Paint Marker Colored Pencil Crayon Oil Pastel Drawing Pencils Chalk Pastel Finger Paint Assorted Craft Items Clay Assorted Papers	Watercolor Paint Tempera Paint Acrylic Paint Marker Colored Pencil Crayon Oil Pastel Drawing Pencils Chalk Pastel Assorted Craft Items Assorted Papers Water Soluble Pencils Clay Glaze	Watercolor Paint Acrylic Paint Marker Colored Pencil Oil Pastel Drawing Pencils Chalk Pastel Assorted Craft Items Assorted Papers Water Soluble Pencils Clay Glaze	Watercolor Paint Acrylic Paint Marker Colored Pencil Oil Pastel Ink Pens Drawing Pencils Chalk Pastel Assorted Craft Items Assorted Papers Water Soluble Pencils Clay Glaze

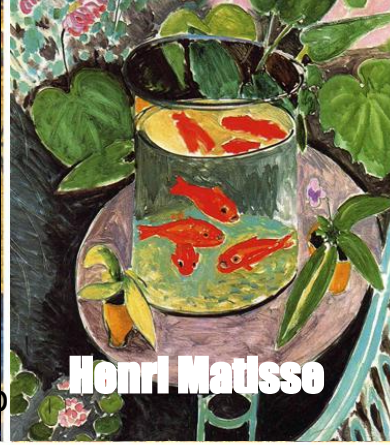
Art History



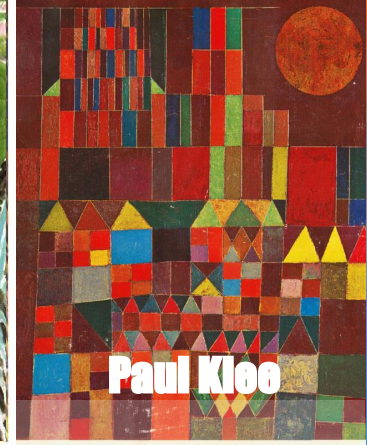
Georgia O'Keefe



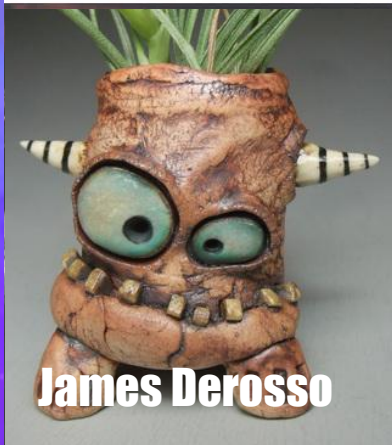
Sandra Silberzwilg



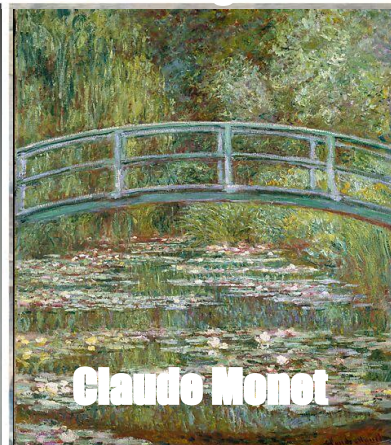
Henri Matisse



Paul Klee



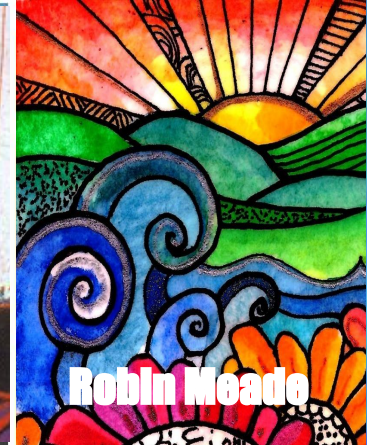
James Derosso



Claude Monet



Pablo Picasso



Robin Meade

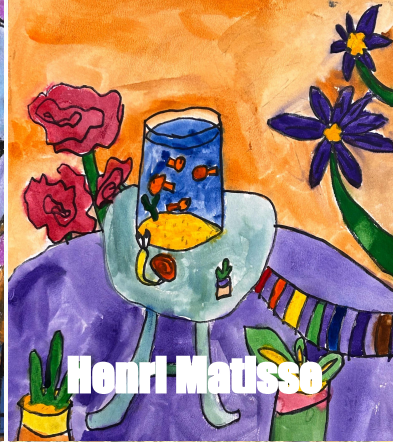
Student Examples



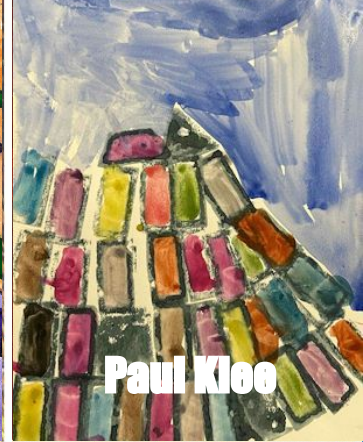
Georgia O'Keefe



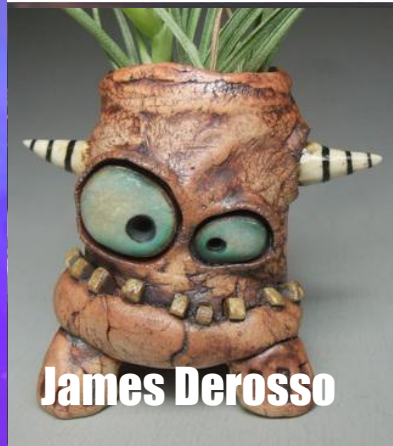
**Sandra
Silherzwalg**



Henri Matisse



Paul Klee



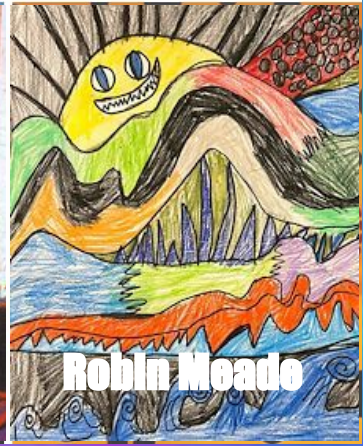
James Derosso



Claude Monet



Pablo Picasso



Robin Meade

How are art grades Calculated?

K	1	2	3	4
<p>Students are graded 1-4 Based on Art Standards (1) Below Standards (2) Approaching Standards (3) Meets Standards (4) Exceeds Standards</p>				
<p>(1) Uses materials constructively to express art concepts (2) Demonstrates appropriate behavior and follows directions</p>	<p>(1) Demonstrates appropriate use of materials and techniques (2) Uses elements and principles of design in an organized fashion (3) Displays positive attitude and behavior</p>			

5	6	7	8
<p>10% Participation 15% Art Exercises 75% Art Projects *Students are graded for participation once a trimester</p>		<p>10% Participation 15% Art Exercises 75% Art Projects *Students are given a daily participation grade</p>	
<p>75% Art Projects They are graded by effort, participation and following criteria of the assignments.</p>			

PreSchool

- **Learning through Play**
- **Small group process art**
- **Themed Sensory Bins**
- **Art Projects connect academic subject matter**
- **Most public school preschools do not have an art curriculum**

Incorporating SEL in Art Education

Giving Students the power of Choice

In each lesson students have many choices to alter their art and make it their own.

- **Promotes student agency**
- **Empowers artistic voice**
- **Supports differentiation of instruction and students' individualized needs**

Incorporating SEL in Art Education

Positive Coping Strategies

- **Art can be a safe way to express intense emotions.**
- **Students can experience catharsis an emotional release that provides relief and reduces stress.**
- **Unified Arts and G periods are offered as an extra time time for students to express themselves in a less structured environment.**

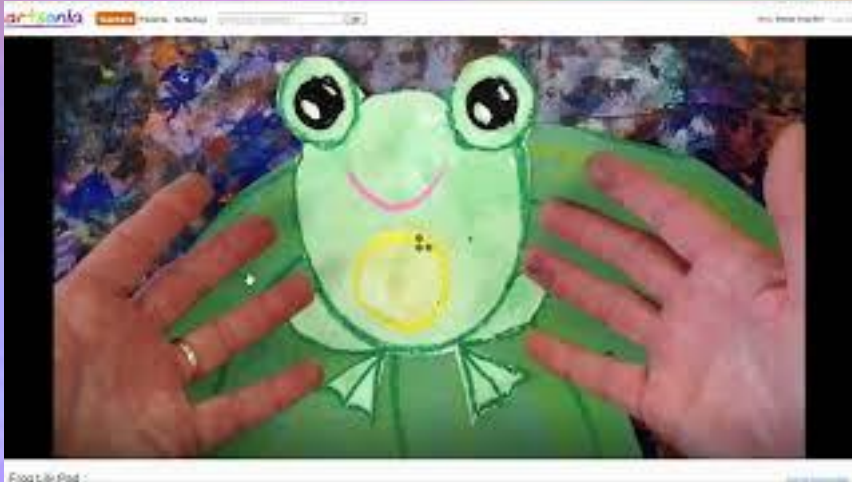
Incorporating SEL in Art Education

Teaching Social Skills

- **Art activities provide a unique and engaging platform for promoting social skills development. Through art, individuals can express themselves, communicate their thoughts and emotions, and gain a deeper understanding of others.**

Community Outreach

artsonia



MAY 2ND
**ASHFORD
SCHOOL'S**
ANNUAL ART SHOW

LOCATED IN THE CAFETERIA AND
RAMP HALLWAYS AT 5-6:30PM

AS ALWAYS WE ARE HAVING A
POTLUCK!!! PLEASE BRING AN APPETIZER
OR DESSERT! IF YOU CAN'T WE STILL
WANT TO SEE YOU!

IF YOU HAVE ANY QUESTIONS EMAIL
DBRODOFF@ASHFORDCT.ORG

